



Supporting the whānau of
premature and unwell babies

20
24

Annual
Performance
Report

Pūrongo-ā-Tau

Table of Contents

Message From Our CEO	3
Our Purpose	4
Our Impact in 2024	6
Support We Provide	8
Whānau Stories	12
World Prematurity Day 2024	20

Our Amazing Fundraisers	22
Our Funders and Supporters	26
Volunteer Profile	28
Our Team	32
Map of NICUs & SCBUs	36
Financial Statements	39

Report from the Board & CEO

Te Pūrongo a te Poari me te Kaiwhakahaere Matua

Tēnā koutou katoa,

On behalf of the Board and the Little Miracles Trust team, I am proud to present our 2024 annual report.

It was my privilege to join this amazing organisation in January 2024 – and thanks to our extraordinary operational kaimahi and the dedication of our Trustees, my steep learning curve has been blessed by the support and aroha of a team that knows firsthand what a difference its service makes.

This year marked many achievements. We are delighted to say that thanks to the donors and partners supporting our mahi, we were able to balance breaking even with providing a comprehensive service for families in need.

At the Trust, we run very lean - we have no buildings, offices or vehicles: our focus is absolutely on providing our frontline cot-side service in each of New Zealand's neonatal intensive care units (NICU). Across 2024, we funded 6,000 hours of cot-side peer support for families across New Zealand and issued over 4,000 emergency care packs. We hosted 300 morning teas and lunches for neonatal parents to share a moment of respite and connection; and facilitated 150 post-discharge developmental playgroups across Aotearoa.

We know that New Zealand's neonatal families do it hard – so the launch of



our national Family Assistance Fund this year was a huge milestone. Proudly supported by Woolworths NZ: The Trust has provided more than 650 vouchers to whānau in need in units across the country. And the long-awaited completion of the Manaaki Room, a beautiful space in Waikato Hospital NICU for whānau who need privacy to hear and process bad news was a moment that meant a lot to us. We are deeply proud of our Waikato-based team that drove that project across several years.

And finally, I need to take a moment to appreciate the many different threads that make up the beautiful cloak that we wrap around the families we walk alongside. To our wonderful team who go above and beyond every single day: arohanui. To our army of Trust volunteers: thank you for being so generous with your time. And to all of our many donors, fundraisers, funders and partners: our heartfelt gratitude for your contribution big or small - I hope that this annual report reflects the difference that your kindness has made to the whānau of some of the tiniest and most vulnerable New Zealanders this year.

Ngā mihi nui,
Dr Sarah Rusholme

Our Purpose



Tō Mātou Pūtake

The Trust is Aotearoa New Zealand's national neonatal charity. Established in 1986 by two families of extremely premature babies, we now provide support and resources to all whānau going through the stress and anxiety of a neonatal journey.

Our Vision

To support all whānau of premature and unwell newborn babies across Aotearoa New Zealand.

Our Mission

We are dedicated to making a difficult start to life that little bit easier.

Our Promise

Support for whānau in neonatal intensive care and special care baby units when they need it most.

We're here for a very simple reason.

To make a difficult start to life that little bit easier.

By supporting parents and whānau through a time that no one is prepared for. A newborn surround by monitors and tubes, not hugs and cuddles.

A hospital stay lasting weeks or months, not hours or days. Eyes filled with tears of sadness and worry, not tears of happiness and joy.

These are the times you need someone who knows what you're going through to tell you it's going to be alright.

Someone who can give you the kind of support and resources that will make all the difference.

Someone who can say **"We're here for you"**.

THE LITTLE MIRACLES IMPACT 2024

YOUR SUPPORT HAS ENABLED OUR

National Service Delivery Team to supply...

4,369 *Equal To* **\$59K**

EMERGENCY CARE PACKS



TOTAL DOLLAR VALUE

3,292 hand-delivered to whānau in NICU and 1,077 to whānau in SCBU



1,425

PICK-ME-UP PACKS

*Delivered to NICU & SCBU units
on Mother's Day, Father's Day
& Christmas Day.*



\$2K for neonatal
nurse training

\$12K support for
neonatal equipment,
including completion
of the Manaaki Room
in Waikato NICU

WE RAN **146** PLAYGROUPS

=219 HRS

*and welcomed 1,133 babies
with their caregivers*



OVER 300

Morning teas / lunches hosted

651 VOUCHERS



*issued to relieve
family hardship*

Nearly \$60K in value



Provided over
1,000 DAYS
of cot-side peer support



That's nearly
6,000 HRS
across every New Zealand NICU

18,000 members of our
social media community

47,813 website visits

1,164 online resource
downloads



We were only able to achieve this because of the phenomenal support & sponsorship received from businesses, charitable trusts and individuals in our wonderful community.

The Support We Provide

Te Āwhina ā Mātou

Every year approximately 5,000 babies are born prematurely in Aotearoa New Zealand.

There are also more than 1,000 full-term babies who require admission to a Neonatal Intensive Care Unit (NICU) or Special Care Baby Unit (SCBU).

Overall, one in ten Kiwi babies will spend time in a neonatal unit.



The Little Miracles Trust exists to support these whānau through a neonatal journey that can be full of stress and anxiety. This help is provided in many ways: all designed to “make a difficult start to life that little bit easier”.

Cot-Side Peer Support in the Hospital

The Trust teams are embedded in all six of New Zealand’s NICU. These Family Peer Support Coordinators are there for whānau to lean on during a traumatic time. Most of our team are former-NICU/SCBU parents, so they are the perfect listening ear or shoulder to cry on. In addition, we offer items such as breast pumps for hire and sale: essential items to help whānau during a tough time, such as prem clothing and nappies, lactation aids and lots of beautiful woollen goods - all handmade with love by our amazing army of volunteers.

'Shoutout to your amazing ladies in Waikato & Auckland NICU. We have finally been discharged from Rotorua today back home to Taupo after being in Waikato & a couple of small stints in Auckland... (Our baby) is smashing it and we're such proud parents. Your support was amazing! Thank you.'

Emergency Care Packs

Each year we supply more than 4,000 emergency care packs to Aotearoa’s 23 neonatal units: one for each whānau who has a baby admitted to a unit. These iconic purple packs are carefully curated. They are made up of practical yet thoughtful items which will be of use during the whānau journey. We thank our partners Baby Factory, SILK Water Wipes, Huggies, HELL and the army of sewers and knitters for their donations that help fill these packs with love.

'I take my wee purple bag everywhere for my son's tubie bits and pieces. I cannot count the amount of times that little purple bag has helped to strike up a conversation and connected me with other NICU mums'

Regular Unit Lunches & Morning Teas

One of our most enduring support events, these sessions provide an opportunity for Mums and Dads with babies in the unit to meet and connect during an anxious and isolating time. It’s an opportunity for a little respite and connection. It’s also a place where our Family Peer Support Coordinators can provide information, support and answer any questions. Parents develop support networks with other parents, which helps with life outside of the unit.

'This really helped me to step away for even just an hour when I was in SCBU with my boy recently... Plus the korero was super helpful & put me at ease. The sweet treats were pretty awesome too. Jess is amazing'

Our Family Assistance Fund

We know that many of the families that the Trust supports might be in a unit for many months – and many hundreds of kilometres from home and loved ones. Launched in 2024, and generously supported by our partner: Woolworths NZ as well as other grants such as the New Zealand Lottery, our new Family Assistance Fund enables the Trust to support the families doing it hard in neonatal units across New Zealand with Woolworths vouchers to help ease the burden of a NICU or SCBU stay.

'It was such a blessing during our unexpected challenging time. It definitely helped us to buy baby items and save money for two weeks. Thank you for being amazing and doing a wonderful service'

Developmental Playgroups

Returning home with a baby that was premature or sick can have demands over and above a full-term healthy newborn, so parents who have had a NICU or SCBU experience often need different forms of support once they return home. They’ve gone from a busy hospital ward with round-the-clock support to being at home on their own. They’re at greater risk of suffering from depression, anxiety or even PTSD. They may not have had the opportunity to join an antenatal group. Or have a baby that is infection-prone or still needs additional medical support. The Trusts national network of developmental playgroups is unique as they are facilitated either by an Occupational Therapist or a Physiotherapist who is there to talk about baby’s development milestones and give advice in an environment that is designed especially for neonatal whānau.

'Playgroup has been fantastic, being able to discuss progress and get tips from Janet has seen Lexi become so much stronger and it finally feels like she is making progress!'

Gifts for Special Days

We know how hard it is to be in intensive care with your baby and this can be felt even more on days like Mother’s Day, Father’s Day and Christmas Day. Our team works closely with our partners to put together some thoughtful gifts for Mum, Dad or the family to be ready by baby’s bedside when they visit on that special day.

'We ended up spending 19 days in SCBU with Jasper, which included Christmas Day. We did not expect the amazing, kind and useful presents from Little Miracles at

all, and it made the hugest difference to what was a pretty grim day for us. I was absolutely blown away and in tears. Such unexpected generosity at such a vulnerable time... I'll remember that forever.'

Celebrating Baby's Milestones

We're all about celebrating how well a baby is doing during their time in a unit, so each family receives a set of beautiful bilingual milestone cards funded by our friends at Huggies, to help them keep a visual diary of important days like when their baby hits the 1kg mark or goes tube free! Plus, we have a special '100 Day' certificate and bunting for those little ones who reach up to 100 days in hospital. And, as each family takes their baby home, we supply graduation certificates to present to each whānau on discharge and there's a special selfie frame to capture that magical moment too.

'Receiving your thoughtful gift pack today brought a tear to our eyes. It was truly heartwarming to see the care and consideration put into every detail, including the te reo Māori milestone cards, which deeply resonate with our values and culture. Your kindness has brought a ray of light into our lives during a time of uncertainty, and for that, we are forever grateful.'

Contributing to NICU and SCBU Facilities for Families

In 2024, we were proud to have sourced funding for, and co-managed, the completion of the Manaaki Room in Waikato NICU. This beautiful room is a place of calm - specially designed as a space for whānau to take time during challenging times. Across Aotearoa, many of the chairs used for all-important kangaroo cuddles have been supplied by us; books and toys to aid brain development and bonding; breast pumps and pillows for Mum to express breast milk for baby and all sorts of items to make parent rooms that little bit more welcoming.

'Thank you so much for granting us the six breast feeding pillows. They have been so well received and well utilised. Many thanks once again from all of us in Hawkes Bay'

Online Resources

We're proud of our thriving online community, and we also have a [website](#) with a wealth of information for parents to help them navigate their neonatal journey. Our [Family Stories](#) section is always extremely popular – candidly sharing inspiring and moving stories of many different journeys, helping our families know that they're not alone. We also create [podcasts](#) and send out a newsletter to keep our dedicated supporters up to date with news from the Trust as well anything new and interesting in the neonatal world.

Connect with us today - on [Facebook](#), [Instagram](#) and [LinkedIn!](#)

'The resources, care, and encouragement you offer help turn overwhelming times into something a little more manageable, and we're so grateful for the work you do. It means the world to families in neonatal care to know they're not alone, and you make sure of that every single day'

Building a Stronger Future

Supporting the multi-disciplinary neonatal staff we work alongside is vital. This year, the Trust has funded nurses to attend training and conferences, and we're also part of a range of unit training and education days. We've connected our community to invitations to participate in a range of research projects, and members of our team have provided lived experience insight into projects shaping guidelines and initiatives designed to improve outcomes for the babies and their families who will come after us.



Whānau Stories

Ngā Kōrero a te Whānau

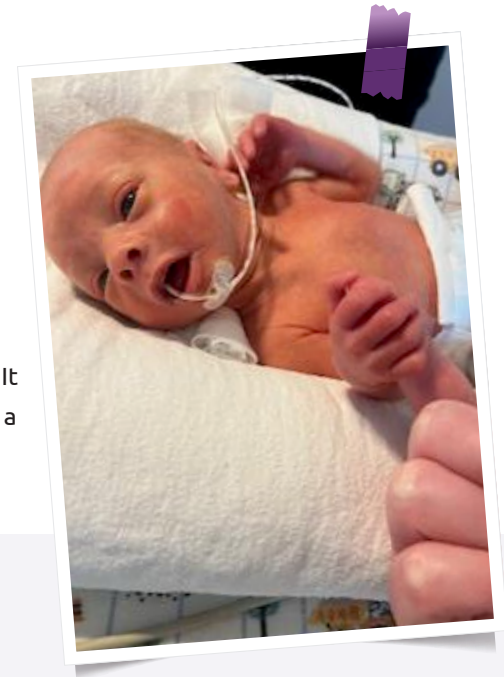
A huge thank you to these families for their kind words and for bravely sharing their story of a neonatal journey. It keeps us motivated knowing that the support we provide these whānau with when they need it most does make a difficult start to life that little bit easier.

Savannah

Our story starts in April of 2024 when after weeks of feeling unwell, a test finally confirmed that I was pregnant with my first child. I spent the first 20 weeks of my pregnancy more tired, nauseous and angry than I'd ever been before. I didn't think much of the aches and pains as everyone I had spoken to brushed it off as "normal".

At 20 weeks 2 days pregnant, I woke up early to get ready for work and found that I was bleeding. After being examined at Waitakere hospital, the midwife informed me that my cervix was 3cm dilated and had bulging membranes. I was swiftly rushed to North Shore hospital where I underwent emergency surgery to have a cervical stitch placed. Luckily the surgery was successful and my midwife gave me strict orders to be on bedrest for the remainder of my pregnancy.

I spent every day telling my son that he had to grow big and strong before he could be born, ever defiant, he decided that another 20 weeks was far too long to wait. My waters started to leak at 29 weeks 5 days. I spent 6 days in Auckland City hospital where my son was closely monitored.



Baby William Fox Dyche, affectionately called "Fox" was born at 30 weeks 5 days weighing 1610g. With apgar scores of 9 and 10, Fox proved that he was strong enough to join us early. Fox spent the first 10 days of his life in Auckland City NICU on c-pap with an NG tube, both of which he pulled out every day. After 10 days, Fox was transferred to Waitakere SCBU, this is where we called home for the next 55 days.

During our hospital stay I felt a lot of guilt around my body failing my son, not only did I have an incompetent cervix, I also had very low milk supply. The incredible staff at Waitakere SCBU supported me and my whanau and celebrated all of our little wins. I felt less alone hearing the nurses stories of having or being prem babies. Fox went from strength to strength, growing quickly and meeting milestones, all while demanding cuddles 24/7.

“ *During our hospital stay I felt a lot of guilt around my body failing my son*

... The incredible staff at Waitakere SCBU supported me and my whanau and celebrated all of our little wins.’



Fox is now a feisty 4 month old, weighing well over 6kg. We will be forever grateful to the wonderful nurses and doctors at Auckland City NICU and Waitakere SCBU for the love and care they gave to our son. We are also immensely grateful to the lovely staff at the Little Miracles Trust for helping us on our journey with our little Fox.





Tayla

My husband, 2 year old son and I live in Whangarei and were excited to be pregnant with our second baby. After a very easy first trimester we turned up to our 12 week scan to find out I was carrying identical twin girls! It was a huge shock and we were very overwhelmed to say the least.

We had barely gotten our heads around the fact that we were having two babies before we were referred to Auckland's maternal foetal medicine team due to a size discrepancy between the two babies. We were diagnosed with selective foetal growth restriction as one baby was over 20% smaller than the other due to where the cord was inserted into the placenta. The doctors weren't sure if our babies would survive, but we just keep coming back for a scan every fortnight to monitor their progress and all the other risks that come with carrying identical twins.

Both babies growth tracked well, although the size difference remained. The smaller twin also had abnormal blood flow patterns which meant that at only 26 weeks pregnant, it was recommended that I be admitted to Auckland hospital for

close monitoring in case our babies got into trouble and needed to be delivered prematurely. I had ultrasound scans 3 times per week and CTGs twice daily. The goal was to reach 32 weeks before they would deliver our babies (unless they got into trouble sooner) as this was when the risks inside started to outweigh the risks of being delivered prematurely for our type of pregnancy.

It was here on the high risk antenatal ward, that I first meet the Little Miracles Trust team who hosted an antenatal support group for mums whose babies may end up in NICU. I didn't even know there was a whole ward dedicated to high risk pregnancies so it was nice to be able to chat to other mums about their situations and have their support too – even if I did cry every time I talked about my journey so far!

My husband and son were able to travel down from Whangarei every weekend and stay at the Ronald McDonald house to spend time with me which was my favourite part of each week. Luckily my babies stayed stable and continued to be happy inside and grow appropriately. The day before our scheduled C-section at 32 weeks pregnant, I had a routine CTG which showed our little twin was in a bit of distress, so the doctors decided to get our girls out 1 day early.

“ *I didn't even know there was a whole ward dedicated to high risk pregnancies*

... so it was nice to be able to chat to other mums about their situations and have their support too - even if I did cry every time I talked about my journey so far!

Mila and Kayley were delivered on the 5th of June 2024 at 2:06 and 2:09am weighing 1.8kg and 1.47kg respectively. They came out with a strong cry and the nurses called them 'fiesty little girls'. They were stabilized on a type of breathing support called CPAP and transferred to NICU. The girls did amazing, coming off their breathing support after only 5 days. After this they were mainly just 'feeders and growers', requiring breastmilk via a nasogastric (NG) tube so they could grow until they were strong enough to learn to breastfeed.

The staff at the Little Miracles Trust were a huge support for us, checking in daily to see how we were and hosting another support group for mums who had babies in NICU once a week. I was able to meet other mums going through a similar journey to us and hear their stories. I didn't know many people who had premature babies so this was an amazing support for us. They also provided us with a chilly bag full of goodies and the shop in NICU was so good to stock up on lactation cookies and buy anything else we needed for me or the babies without needing to head to the mall.

We were able to fly back to Whangarei hospital's neonatal unit via the Starship air ambulance when the girls were 2 weeks old so we could be closer to home. Kayley needed a few days of high flow breathing support after the flight. They

progressed well moving out of the incubator and into cots and could now be dressed in clothes. Mila and Kayley both started practicing their breastfeeding around 34/35 weeks, but still required breastmilk top ups via the NG tube for another few weeks.

Unfortunately, Kayley caught a virus which really set her back as she was so snuffly and tired, she wasn't able to breathe properly and the coordination required to breastfeed was too hard for her so she was relying on only NG feeds again. She needed to go back on high flow to support her breathing for the third time but luckily it was only for a few days. She started to get better and pick up on feeding again about 2 weeks later. After a total of 58 days in hospital, on their due date, the girls were fully breastfeeding and putting on weight, so we were allowed to go home! They weighed 3.06kg and 2.54kg respectively.

We have been home now for over 4 months and the girls are thriving! They are feeding and growing well and have no medical conditions. They are happy, healthy little girls and we are enjoying all living at home together as a family of 5. It's a bit chaotic having 3 kids under 3 and we are still finding our routine, but we are so grateful to have them at home, safe and sound after such a rollercoaster of a pregnancy and start to their lives.

“ *Jemma from the Little Miracles Trust became someone who was always a listening ear for us*

... and helped us navigate through some tough times, also hosting morning teas in the parents lounges for the families in the unit.’

Rachel & Jordan

On Wednesday 28th Feb (23+6weeks gestation) Jordan, our 2 golden labradors and I headed down to an obstetrician appointment at Southland Hospital as I hadn't been feeling myself, a few people had mentioned 'it's just pregnancy things' and 'you're pregnant, don't worry so much. You'll be fine'.

We thought we would be in our appointment for an hour and be taking the dogs for a run along the beach not long after. Only to be told, you're not going home.

After some routine checks in the appointments, they admitted me to the ward and monitored me closely. Being checked every hour my blood pressure was on the rise, and they decided it was time for us to move on to Dunedin as our baby was highly likely going to be delivered early. At 1:30am they wanted to airlift me to Dunedin hospital, but the weather didn't permit so we were transferred via ambulance the next morning.

We were given our first steroid shot to help develop Rosie's lungs before leaving Invercargill to give her the best shot when the day came to deliver our baby girl.

Once transferred to Dunedin on Thursday morning, I was on medication for my blood pressure, I had been given our second steroid shot and things had calmed down, ultrasounds were good, Rosie's heartbeat was healthy, and our baby girl was kicking away in mums tummy. One doctor even mentioned that I may be returning to Gore and working for a few more weeks yet.

Rosie was being monitored with the ECG machine every couple of hours and planned to have ultrasound scans every 2 days to check the placentas blood flow as that was what was in question (we had just had our 20week scan which everything looked great and we specifically remember the sonographer showing us the blood flow and spent a few minutes just watching it).

Jordan had come home for the weekend to pack us a bag and get us our essentials as we had left to our hospital appointment thinking we would be coming home. Thankfully, my mum had come to Dunedin and stayed with me in the hospital.

I had an ultrasound on Sunday morning which had shown the placentas blood flow had started to really slow down and they decided to monitor Rosie with



ultrasounds daily. This was when things started to change and I felt very sick myself, I was in a lot of pain which even codeine wasn't helping my pain and I spent most of the day on the bathroom floor of my hospital room. My liver and kidneys were under attack.

Monday 4th March at 9:30am we had our final ultrasound which confirmed the placenta's blood flow had reversed, and it was time for our baby girl to be born into the world. They told us that thankfully she was a girl as the stats show girls have a higher survival rate and thankfully she would weigh over 500g. At 12:29pm Via emergency classical C-section, with 22 people in the 40degree temperature theatre room Rosie Jane Anderson weighing 585grams was born letting out 2 cries to let us know she was here.

She was taken out and her wee body was wrapped in a plastic bag to help keep her warm and taken through to the side room where the Neonatal intensive care team got her stable and set up with breathing support, Jordan was able to clamp the cord and cut the umbilical cord and Rosie was put in to her warm incubator with pure silk sheets to help protect her fragile skin.



As the say the first 72hours are crucial for these little ones so each day we are thankful that Rosie was doing well continuing to gain weight and she just needed time to grow and get stronger.

On day 10, things dramatically changed, and an X-ray had shown that Rosie had a hole in her GI tract (NEC), and she needed to get airlifted to Christchurch Woman's hospital for surgery. Rosie had a breathing tube put in for transport and surgery and we were told we should be back in Dunedin in about a week's time.

We were unable to fly with Rosie as she needed medical staff to fly with her so we said our "have a safe flight and we will see you in Christchurch " Jordan and I set off for the nearly 5hour drive to Christchurch. It felt like the longest drive ever.

A couple of hours from Christchurch we had a call letting us know Rosie had landed and asking how far away we were. In the last 20minutes of the helicopter flight Rosie had deteriorated a lot, and she required to be neopuffed for the remainder of the flight.



A team from Christchurch NICU met Rosie on the helipad once she landed to help stabilise her as she was in a bad way. The Christchurch NICU team of nurses, doctors and consultants spent a couple of hours getting Rosie stabilised and set up in the incubator on the ward before we arrived.

Once we arrived, we finally got to see our precious little girl again briefly before we were called away to a room with a team of surgeons, consultants, and anaesthetists where they warned us how sick Rosie had become and they needed to do surgery right away for the best possible chance of survival.

Surgery got underway while we nervously sat next door in a family room watching the clock and waiting to hear something. At just after 10:30pm the surgeon came through to let us know that surgery had gone well, and they had removed 3cm of Rosie's bowel and she had 2 stomas formed (1 working and once Rosie was bigger and stronger they would operate again to reconnect the 2 parts of her bowel. We were told we still had a very sick little girl with a long road ahead but there weren't any complications from surgery and the only long term affect she would have is her scar.

The next few days Rosie took slow and steady steps to recovery but was doing so well considering what she had just been through, truly such a wee fighter. 7 days after surgery Rosie had caught a very rare infection and needed a certain special antibiotic flown down from Auckland Starship to help fight off the infection. Rosie also got pneumonia while she had this infection causing her to be very sick and needing a higher amount of oxygen at time to support

her. Rosie spent a few weeks on high frequency ventilation fighting the infection and the pneumonia before she was strong enough to come off the breathing tube and move down to NIPPV and again down to CPAP a few weeks later.

On 16th May at 35weeks gestation, 2 months after the first surgery Rosie was bigger and stronger so she went in for the second surgery to have her bowel reconnected. Surgery went well and Rosie recovered well. After a couple of weeks, we were able to get her back onto NIPPV, moving to CPAP and then to high flow. 6th June we were able to transfer via air ambulance to Invercargill where we spent the next few weeks working on feeding and growing before finally being discharged home on 11th July after 134 days in NICU/neonatal.

Giving birth 16weeks early and having a long road ahead of us was terrifying but we are forever grateful for the support we had during our time in NICU, we met some amazing families and people through Ronald McDonald House and NICU and which we will forever be friends with, and they hold a special place in our heart!

Jemma from The Little Miracles Trust became someone who was always a listening ear for us and helped us navigate through some tough times, also hosting morning teas in the parents lounges for the families in the unit.

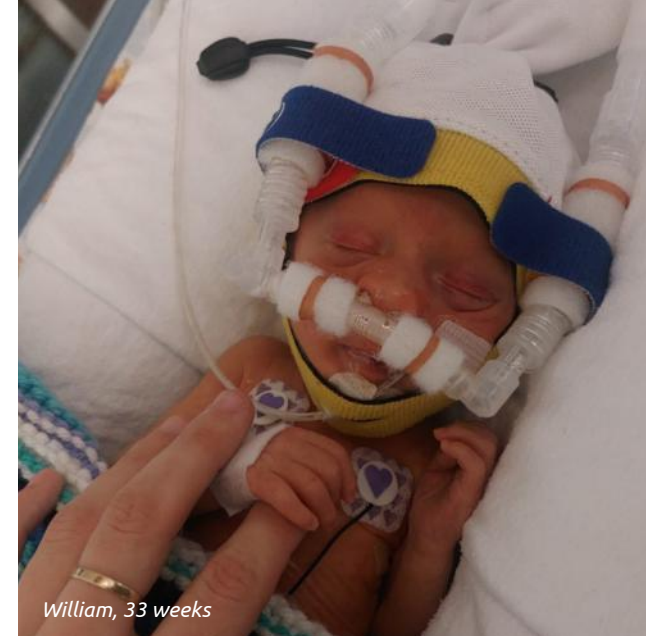
We hope our story give other families hope on those tough days and that these little babies are resilient and there is so much support to wrap around you during your NICU journey.



Maya, 35 weeks



Pippa Mae, 32 weeks



William, 33 weeks



Rosie, 24 weeks



Beau, 25 weeks



Tommy, 30 weeks

World Prematurity Day 2024

World Prematurity Day is one of the most important dates in our calendar to raise awareness of the challenges and burden of preterm birth globally. Celebrated annually on 17 November, World Prematurity Day aims to raise awareness of prematurity and the concerns of preterm babies and their families globally.



In November 2024, an enormous amount of mahi was undertaken and the neonatal community came together. The Trust organised a large number of activities throughout November, based around World Prematurity Day, and raising much needed awareness and funds, including:

Thanking our neonatal nurses

We mobilised an army of amazing baking volunteers to help us provide delicious morning or afternoon teas for all the neonatal units throughout Aotearoa. Purple ribbons were given to families so they could [#showusyourribbon](#) to raise awareness, and Huggies provided some selfie frames for families to take [#worldprematurityday2024](#) selfies.

Sharing personal stories

Giving hope and encouragement, and raising awareness: On our social platforms throughout November a number of families shared their personal neonatal journeys providing hope and encouragement to many.

Lighting Up Purple

A record 50+ landmarks throughout Aotearoa (and many more around the world) lit up purple to raise awareness of the 15 million babies born prematurely around the world each year and the one million of these babies who sadly lose their fight for life. From the Castlepoint Lighthouse to Eden Park, a wave of purple light was seen across the country.

Out and About

We had billboards, bus shelters, digital and radio advertising working for us across the month to get our donation ask out there.

Incubator Donation box hosting

Thanks to Hamilton Airport, Stonefields New World, PAK'nSAVE Kapiti, Gilmours Lower Hutt and Dunedins Golden Centre Mall we were able to raise funds and awareness with our unique incubator donations boxes.

Partner Activity

Baby Factory sold Molly Woppy pink heart cookies on our behalf, and The Sleep Store ran a buy one-give one on swaddles. Huggies ran a staff fundraiser and Mojo Coffee concocted a special coffee blend for us and sold that, along with their delicious cheese scones, to raise funds for us too. We also had some amazing individuals who raised funds by running marathons and doing a 12 hour bowlathon! (see ["Our Amazing Fundraisers"](#))



Our Amazing Fundraisers

Te whakamīharo ngā tāngata e tautoko ana i a mātou mā te kōhi moni

We are so grateful to those amazing people who, having experienced our support first-hand, then want to give back for the care they received during their neonatal journey. Here are just a few of the generous individuals who fundraised for us in 2024...



Tommys Marathon

Tommy ran the Auckland Marathon in November and raised over \$3,000.

In early 2024, my wife and I welcomed our daughter Maya into the world. Maya had a difficult start to life. When she was born, she was not breathing. Doctors rushed to save her life, and in the days following, she required specialist support.

Maya was cared for by Wellington NICU. Their dedication and expertise enabled Maya to go from strength to strength. The Little Miracles Trust offered us invaluable support and encouragement during this time. The Trust's work is critical for any family facing a difficult journey with their baby.

I pushed myself to run the Auckland Marathon (my first ever marathon!) because I wanted to raise money for the Little Miracles Trust and help them to help others facing difficult times.

Despite Maya's immense challenges, she is now happy and healthy. I'm glad I was able to give back in some small way.

Tommy.



Jasons Bowl-a-thon

Jason decided to bowl in the cricket nets for 12 hours on World Prematurity Day and raised \$2,000 for us! He also got interviewed for "The Listener"!

Our baby Genevieve arrived at 27(+6) weeks gestation, having endured a high-risk pregnancy, and was given a 50 percent chance of survival.

She eventually came home after spending 83 days in the Waikato Hospital NICU, and is now doing well, which we are thankful for. However, every premature journey is all-consuming for parents and it is something that no one intends to go through.

The Little Miracles Trust play a vital role in supporting the families involved and I wanted to raise awareness of World Prematurity Day, as well as the work of the Trust.

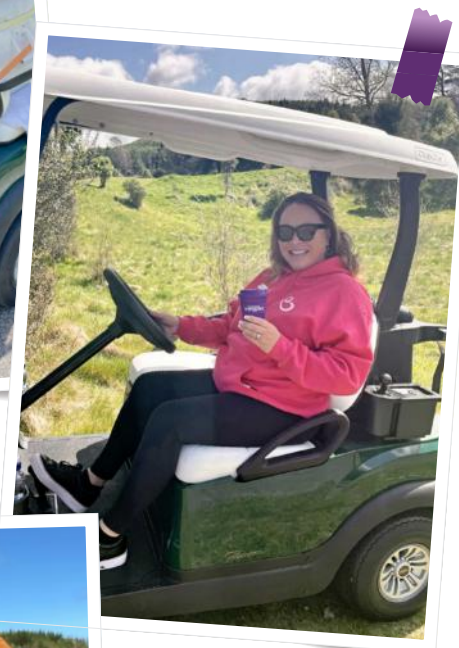
Jason.

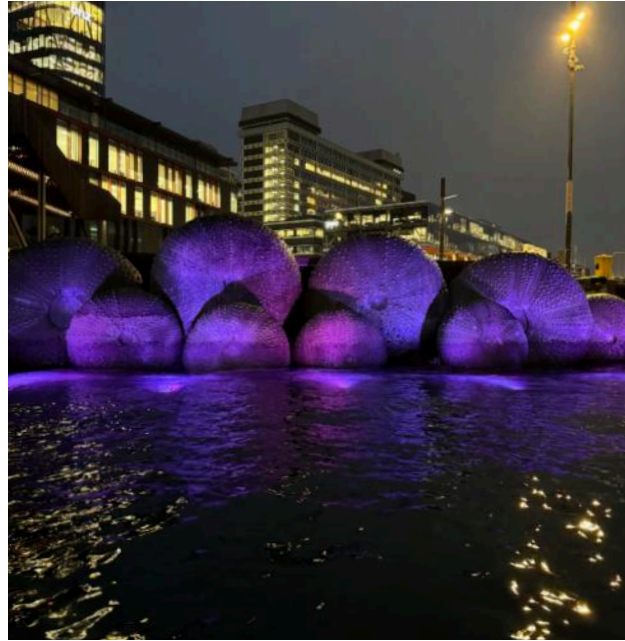
New Zealand Financial Markets Charity Golf Classic

The fabulous team at NZX, along with S&P Dow Jones Indices and BGC Group, put on a spectacular event at Wairakei Golf & Sanctuary and The Hilton Taupo in September to raise awareness and much needed funds for the Trust and for the whānau we support.

Just over \$50,000 was raised at this event, thanks to some very generous donations and fantastic auction items.

We feel privileged to have again been the chosen charity for this key event for the industry and extend our heartfelt thanks to everyone who was involved in making the weekend a success.





Our Funders & Supporters

Ō Mātou Kaitautoko

It is only because of the amazing support we receive from our donors, sponsors, grant providers and supporters that we are able to support the whānau of Aotearoa NZ's premature and unwell babies. Thank you to all those who supported us this year through baking, knitting, crafting, donating goods, donating items for care packs and items for use by families in the neonatal units. We couldn't do what we do without you all!

Ngā mihi maioha.



Major Contributions

The Little Miracles Trust team is thankful to have the following incredible individuals, trusts, partners, sponsors and grant providers who supported our mahi throughout Aotearoa this year:

- **Woolworths** - \$70,000 (*\$20,000 earmarked for 2025*)
- **NZ Lotteries** - \$54,000
- **NZX** - \$50,837
- **Wright Family Foundation** - \$50,000
- **Anonymous Donor** - \$50,000 (*earmarked for 2025*)
- **One Percent Collective** - \$47,917
- **COGS** - \$26,225
- **Four Winds Foundation** - \$24,000 (*earmarked for 2025*)
- **Total Supply** - \$22,900
- **Rata Foundation** - \$20,000
- **Matt Solutions** - \$20,000
- **Lanakat Trust** - \$20,000
- **Ngatiawa-Russell Lodge Charitable Trust** - \$20,000
- **Christchurch Hospital Volunteers Library Association** - \$18,407 (*earmarked for 2025*)
- **Aoteraroa Gaming Trust** - \$17,500 (*earmarked for 2025*)
- **Pub Charity Ltd** - \$14,610
- **ANZ Staff Foundation** - \$11,941 (*earmarked for 2025*)
- **Foundation North** - \$10,000
- **Lion Foundation** - \$8,000
- **Nikau Foundation** - \$7,500
- **Arrotex** - \$7,500
- **Dorothy L Newman Charitable Trust** - \$6,370 (*earmarked for 2025*)
- **Z Energy - Good in the Hood** - \$6,314
- **The Good Registry** - \$5,156
- **Helen Stewart Royle Charitable Trust** - \$5,000
- **Maurice Carter Trust** - \$5,000
- **Thomas George Macarthy Trust** - \$5,000 (*earmarked for 2025*)
- **Eddie Conlon** - \$4,140
- **Eagers Automotive** - \$4,000
- **Mahoenui Operations** - \$3,148
- **Tommy Livingston** - \$3,129
- **Oceanbridge Shipping** - \$3,000
- **Tauranga Lions Club** - \$2,848
- **Wētā Workshop** - \$2,546
- **Lesley Thompson** - \$2,435
- **Louise Burnie** - \$2,122
- **Alastair Mansell** - \$2,053
- **Amy Cope Photography** - \$2,051
- **Fresh Choice Roslyn** - \$2,000
- **Robert Gillies** - \$2,000
- **Jason Steyn-Ross** - \$2,000
- **Devine Consulting Ltd** - \$1,568
- **Harcourts Foundation** - \$1,400
- **Louisa Castledine** - \$1,380
- **The Adam Family** - \$1,306
- **Alexandra Boyce** - \$1,210
- **Immanuel Marthoma Church** - \$1,150
- **Adam Bowman** - \$1,046
- **Ellen Saturley** - \$1,046
- **Kate Casey** - \$1,026
- **Laith Ikram** - \$1,026
- **Rob Saunders Law** - \$1,000
- **Chubb Life Insurance NZ** - \$1,000
- **Lower Hutt Parents Centre** - \$1,000
- **Wynne Meyer** - \$1,000
- **Chiesi Australia** - Corporate Partner, Undisclosed Amount (*earmarked for 2025*)

We would also like to acknowledge all of the **many generous donations from individuals** which in 2024 totalled...

\$88,948

Thank You!



Volunteer Profile

Kōtaha Kaiāwhina

Volunteers are an extremely important part of our team and are vital for the continued support of neonatal families. We help match valuable skills, interests and availability with one of our opportunities to support others. All contributions, big or small, are welcomed and appreciated!



Pam

For the past five years, I have had the privilege of being part of the Wellington Developmental Playgroup. It has been incredibly rewarding to witness the support and connection parents find in sharing their experiences with others who truly understand the unique challenges of raising a Little Miracles baby. Seeing these tiny babies grow into happy, healthy toddlers is one of the greatest joys of my involvement.

The ongoing support that the Little Miracles provides to families long after their discharge from the Neonatal Unit is deeply valued by all. My time with the playgroup has been both meaningful and fulfilling, and I am grateful to have been a part of it.

“The heart of a volunteer is never measured in size, but by the depth of the commitment to make a difference in the lives of others.”

DeAnn Hollis

“Working with Little Miracles Trust has been a fun bonding experience for the two of us.

... it has been so lovely getting to make connections with people who have been through similar experiences as us.’

Mikayla and Kelly

We have been volunteering for Little Miracles Trust for about a year.

Our journey started seventeen years ago when Mikayla was born a premature pēpē, 6 weeks early to a sick Kelly, diagnosed with HELLP syndrome. Mikayla spent around three weeks in the NICU, and Kelly was able to see a lot of different people going through varying degrees of difficulty in the Women’s hospital.

Last year, when we found out about Little Miracles Trust, we knew that volunteering for them would be fruitful for not just the recipients, but ourselves. Our time is spent packing care packs for the patients on the ward and then delivering them to the ward.

Outside of this task we were able to find specific jobs that interested us both. Over Christmas Kelly was able to actually go into the ward to deliver the packs, making connections with the whānau (as well as reconnecting with some nurses she had back when they were in the NICU!). Mikayla uses her skills with crochet to make stuffed owls that go to the pēpē who have been in the ward for over 100 days!



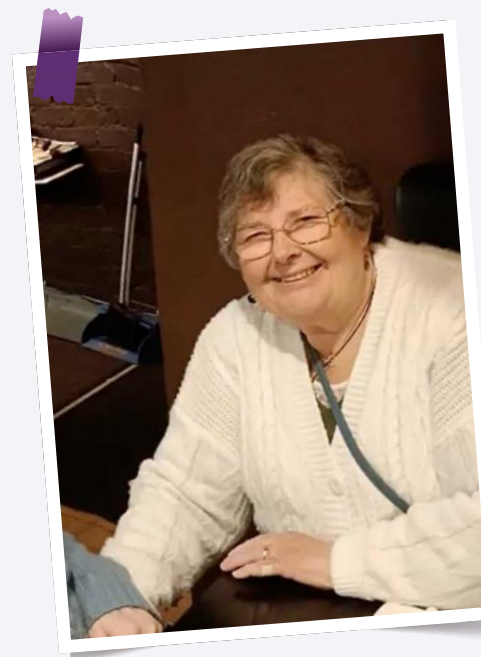
Working with Little Miracles Trust has been a fun bonding experience for the two of us, and it has been so lovely getting to make connections with people who have been through similar experiences as us.

Janine

I have had the privilege of volunteering with The Little Miracles Trust over the past year. My passion for neonatal care stems from my time as Secretary for Middlemore Neonates, where I spent seven years witnessing firsthand the challenges faced by whānau with premature or unwell babies.

Now in retirement, I am grateful for the opportunity to continue supporting families in need. One of the most rewarding aspects of my role is assembling care bags for new mothers and their pēpi—something I feel truly blessed to do from home.

I am deeply committed to making a positive impact in our community and am proud to be part of the Little Miracles Trust.



“*Never doubt that a small group of thoughtful, committed citizens can change the world: indeed, it's the only thing that ever has.*”

Margaret Mead



Board of Trustees



Poari Matua

The Trust is governed by a volunteer Board of Trustees who meet a minimum of four times per year. The members of our governing body, in the year to 31 December 2024 were:



Mike Hartley

👤 *Board Chair - Kaihautū Poari*

Mike Hartley is an experienced governance professional having been a director of diverse companies since the 1990s. Since selling his business Mike has increasingly focused his portfolio of directorships in the not-for-profit sector. Mike has been a director of Visa, Loyalty New Zealand, Marketview, Cigna Insurance and currently sits on several boards including the Hurricances and Wellington Rugby.



Sandra Budd

👤 *Deputy Chair
Heamana Tuarua*

Sandra's passion for neonates was ignited when she specialised in neonatal nursing and went on to lead National Women's Neonatal and Maternity Services. Her belief that parents must be involved in their babies care saw the establishment of a family centered care model. With over 30 years Australasian senior management/chief executive experience, Sandra brings considerable governance experience.



Steve Allan

👤 *Trustee & Treasurer
Māngai / Kaitiaki Pūtea*

Steve is an experienced business executive having worked in key commercial finance roles in media, technology and renewables sectors. Steve's eldest daughter was born premature at 27 weeks along with her twin brother who succumbed to complications of prematurity at 5 months. Having experienced the turmoil that families can find themselves in, he is passionate about supporting the ongoing impact that the Trust has on families.

👤 Trustees *Māngai*



Dale Garton

Dale is the Nurse Unit Manager at Starship Newborn Intensive Care Unit where she experiences every day the impact on families when their baby requires intensive care.



Ellie Wilson

Ellie Wilson is a Taranaki-based lawyer with a particular interest in health and medico-legal issues. Ellie, parent of a 32 weeker, has first hand experience of a neonatal unit.



Michael Jarvis

An experienced managing director, Michael's background spans marketing, advertising, digital, and media sectors. His daughter spent time in the NICU with complications at birth.



Nicola Coom

Nicola is the Chief Executive for the Southern Cancer Society and the Southern Cancer Research & Innovation Trust. Parent of a 29 weeker she understands the impact this experience has on families.



Piyush Makan *(resigned 07/24)*

An experienced finance professional with a passion for helping businesses succeed. Piyush leads business development activities for PwC Tax Pooling.



Rachel Friend

Rachel is an experienced CEO with a demonstrated history of working in the non-profit organisation management industry. Her son was born prematurely at 24 weeks.



Robyn Voigt

Robyn brings over 15 years of invaluable experience as a Chartered Accountant and business coach to our board. Her eldest son was born prematurely at 28 weeks.

Operations Team

A newborn baby is lying in a hospital bed, wearing a colorful headband with yellow, red, and blue sections. The baby has medical sensors attached to their head and chest, and a small white tube is visible near their mouth. The baby is wearing a blue hospital gown and a white diaper. The background is a plain white surface.

Tīma Mahi

The Trust is an organisation that is light on overheads and heavy on in-person commitment and passion. We strive to find the right balance to maximise the support we provide to families and their precious babies.



Dr. Sarah Rusholme

👤 *CEO - Kaiwhakahaere Matua*

Sarah joined the Trust in 2024, proud to be giving back to a charity that supported her and her family throughout their NICU journey.

Her sons, Cormac and Ziggy were born at 34 weeks after a Twin-to-Twin Transfusion Syndrome pregnancy.

Ziggy died before delivery, and Mac spent several weeks in Wellington NICU which is where Sarah and her family first experienced the Trust and the wonderful support they provide neonatal whānau.



Justine Brooker

👤 *Operations Manager
Kaiwhakahaere Mahi*

All four of Justine's boys were born early. This has fed Justine's motivation to help others in similar situations. Her passion for the Trust truly developed after the early arrival of her youngest son Harlow, who was born at 24 weeks.



Samantha Bennett

👤 *Fundraising Manager
Kaiwhakahaere Kohi Moni*

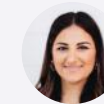
Sam is mum to Oliver, and Ava, who was born at 34 weeks and spent time in the Wellington NICU. Being able to use her marketing and fundraising experience to help families through the rollercoaster of a neonatal journey was the key reason Sam joined the Trust.



Crystal Middleton-Lunn

👤 *Finance Manager
Kaiwhakahaere Pūtea*

Crystal is committed to ensuring financial sustainability and integrity so the Trust can continue supporting families of premature and sick babies. She oversees financial operations ensuring transparency, efficiency and strategic financial planning.



Jadey Drury

👤 *National Service Delivery Manager
Poutaki Hora Ratonga*

Jadey received so much support from the Trust when she was a long way from home after having Frankie, born at 28 weeks. Jadey is passionate about supporting and developing our front line teams whilst helping to keep our service delivery consistent throughout Aotearoa.

👤 Family Support Coordinators *Kaiwhakahaere Tautoko Whānau*



Anastasia Houtas

📍 *Wellington*



Anneleise Lyons-Stockler

📍 *Wellington*



Anita O'Connell

*Lily, 26 weeks
Playgroup Coordinator
📍 Christchurch*



Catharine McKellar

*Isaac, 29 weeks
Playgroup Coordinator
📍 Waikato*



Catherine Edwards

*Zavier & Rico, 30 weeks
📍 Auckland*



Chavvah Harlock

*Hudson, 25 weeks &
Sloane, 34 weeks
📍 Auckland*



Chris Smith

*Max, 31 weeks &
Jack, 35 weeks
📍 Wellington*



Diane Pope

*Support Office Manager
📍 Auckland*



Emma Clark

*Walt, 33 weeks
📍 Waikato*



Jemma Hartley

*Ella, 36 weeks
📍 Christchurch*



Linda Te Aarii

*Zyon, 29 weeks
📍 Middlemore*



Samantha McRae

*Finnley, 27 weeks
📍 Middlemore*



Shelley Gorman

*Mia, 28 weeks
📍 Dunedin*



Susie Cant

*Charlotte, 25 weeks
📍 Christchurch*



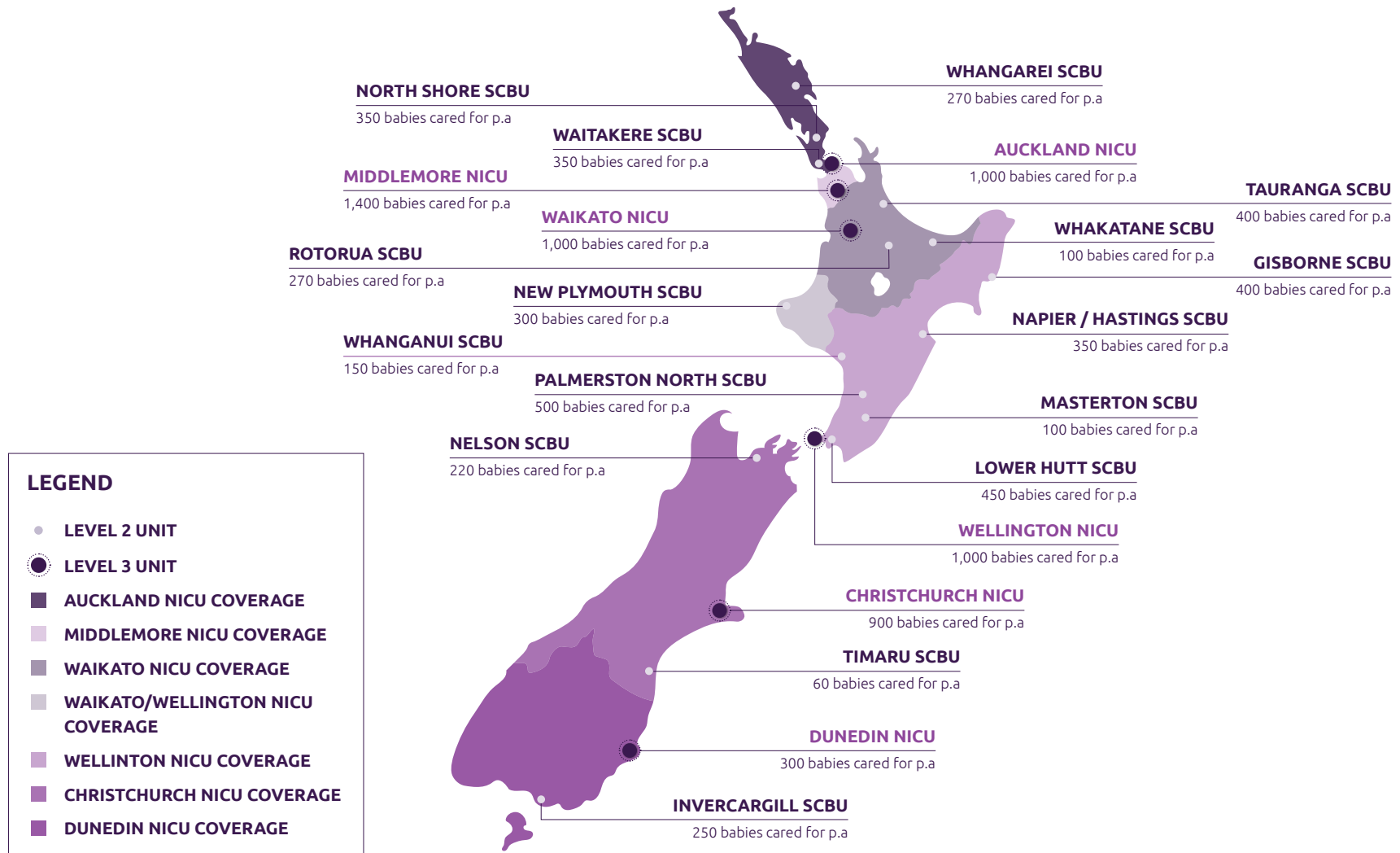
Trish Laphorn

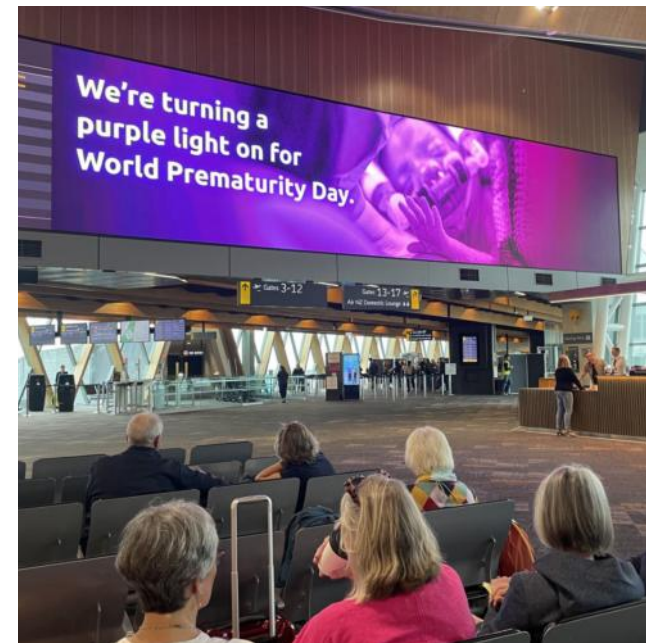
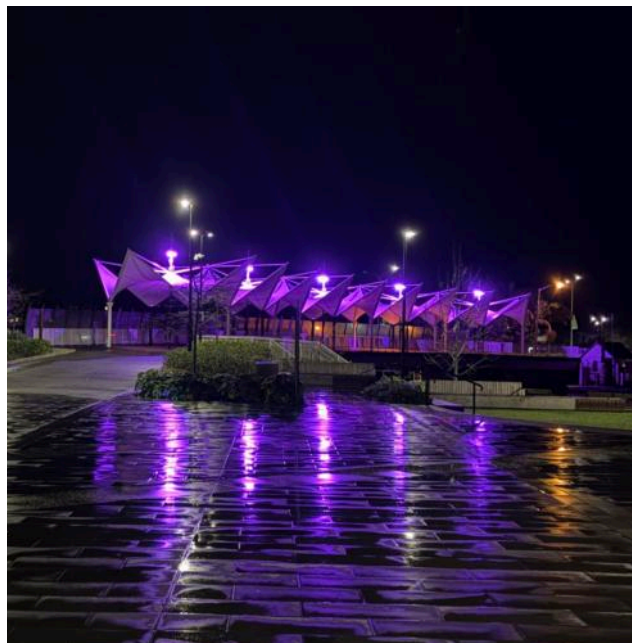
*Ella & Abi, 29 weeks
📍 Waikato*

Map of NICUs & SCBUs

Every year approximately 5,000 babies are born prematurely in Aotearoa New Zealand.

There are also more than 1,000 full-term babies who require admission to a Neonatal Intensive Care Unit (NICU) or Special Care Baby Unit (SCBU).







Approval of Financial Report

The Little Miracles Trust

For the year ended December 2024.

The Trustees are pleased to present the approved financial report including the historical financial statements of The Little Miracles Trust for the year ended 31 December 2024.

The Trustees are solely responsible for the information contained in this financial report and have determined that the accounting policies used are appropriate for the purpose that the Financial Report is prepared.



For and on behalf of the Trustees

Steve Allan, Treasurer

2 April 2025

Entity Information

'Who are we?' and 'Why do we exist?'

The Little Miracles Trust - For the year ended 31 December 2024

Legal Name of Entity

The Little Miracles Trust (formally The Neonatal Trust).

Entity Type and Legal Basis

Trust and Registered Charity

Registration Number

CC56619

Entity's Purpose or Mission

The Little Miracles Trust (the Trust) exists to make a difficult start to life that little bit easier for families of premature or sick full-term babies as they make their way through neonatal care, the transition home, and onwards.

Entity Structure

The Trust is a registered charity in New Zealand (CC56619).

The Trust is governed by a Board of Trustees (the Trustees) who meet in person, via email, and through other technologies such as phone and video conferencing.

The Trustees for the 2024 financial year were Mike Hartley (Chair), Sandra Budd (Deputy Chair), Nicola Coom, Robyn Voigt, Piyush Makan (resigned July 2024), Steven Allan, Dale Garton, Ellie Wilson, Rachel Friend and Michael Jarvis (both joined April 2024).

Day-to-day operations were led by the CEO, Dr Sarah Rusholme, supported by part-time managers across key functional areas, including operations, finance, service delivery and fundraising, as well as dedicated teams of family support coordinators and playgroup coordinators across Aotearoa.

The Trust's operating model relies on a lean paid staffing structure, with volunteers playing a crucial role in supporting initiatives and raising awareness. It also receives invaluable support from several generous organisations, which helps to reduce operating costs and enhances its ability to continue to support neonatal families.

With the expert advice and commitment of the Trustees, volunteers, and supporters, the Trust continues to deliver effective and sustainable services while delivering positive outcomes in the community.

Main Sources of the Entity's Cash and Resources

The Trust receives its cash and resources from a variety of sources, including public and corporate donations, self-run fundraising events, events where it is the chosen cause, and grant applications. It does not receive government funding.

Main methods used by the Entity to Raise Funds

See pages 26-27 for a full list of supporters.

The Trust's primary methods of raising funds include a variety of approaches that ensure financial diversity and sustainability. They encompass individual and public donations, which form a key part of the Trust's support base, along with corporate donations and sponsorship from businesses that believe in its mission. Additionally, the Trust actively seeks grants to support specific projects or ongoing operations. The ability to attract funding through grants highlights its credibility and the trust placed in its ability to manage and deliver on the objectives outlined in each grant application.

Fundraising events play a significant role, with both self-organised events and those where the Trust is the chosen beneficiary, helping to generate funds. Retail sales, including proceeds from in-kind contributions such as donated goods, also contribute to its revenue. The dedication of volunteers, whose time and effort are invaluable, helps reduce operating costs. Community campaigns and online appeals further extend its reach, engaging the broader public in supporting its mission and driving additional financial contributions. More detail follows:

- Public donations from incubator donation boxes hosted at a variety of locations such as supermarkets, shopping malls, airports and other businesses, as well as individual donations through One Percent Collective and The Good Registry
- Grants from organisations such as the Nikau Foundation, COGS, Dorothy Newman Grant, NZ Lottery Grants, Pub Charity, Foundation North, Maurice Carter Trust, Rata Foundation, Woolworths, Lion Foundation, ANZ Staff Foundation, Dorothy Newman Charitable Trust, Aotearoa Gaming Trust, Four Wind Foundations, Wright Family Foundation, Helen Stewart Royle Charitable Trust, Thomas George Macarthy Trust and Chiesi Australia Pty Limited
- A number of organisations that support the work of the Trust such as HELL Pizza, Wētā Workshop, Mojo Coffee, Baby Factory, SILK baby, Huggies, Bell Gully, Minter Ellison Rudd Watts, Kindness Collective, Viva La Vulva, Small Babies, Matt Solutions, Waikato Lyceum Charitable Trust, Bear & Moo, PGG Wrightson, Fresh Choice, Harcourts Foundation, Tauranga Lions, Freemasons, Lesley Thompson and the Christchurch Hospital Volunteers Library Association
- Revenue from the sale and hire of goods online and from retail outlets.

Entity's Reliance on Volunteers and Donated Goods or Services

The Trust's reliance on volunteers, and donated goods and services is essential to the successful delivery of its mission. The donated goods and services, and invaluable skills of its volunteers enable it to operate at a professional level without the costs of additional staff or contractors. As well, the Trust is fortunate to benefit from the generous pro bono professional support of:

- Legal services from Minter Ellison Rudd Watts and Bell Gully
- Information technology services from Matt Renner
- Support and training from Microsoft
- Media placements from MediaWorks Foundation & Go Media's Good Impressions initiative
- PR support from Blackland PR.

Additional Information

Every year approximately 5,000 New Zealand families have a premature baby. In addition, more than 1,000 full-term babies will require intensive medical care. In total, around one-in-ten babies delivered each year will require a stay in a Neonatal Intensive Care Unit or Special Care Baby Unit.

Some babies will be admitted for many months, and some hundreds of kilometres from home.

The Little Miracles Trust is Aotearoa New Zealand's national neonatal charity. We were established in 1986 in Wellington by the two families of extremely premature babies who recognised the huge toll that a neonatal experience can take. In 2024, we provided peer support teams, comprised of people with lived experience of premature birth, offering cot-side support in each of New Zealand's six neonatal intensive care units as well as family support initiatives in all SCBU, online and post-discharge via our national neonatal graduate developmental playgroup network.

The Trust wishes to acknowledge the unwavering support it receives from donors, sponsors, volunteers and partners, which enable it to continue delivering essential services and making a meaningful impact in the community. Without their help, it could not provide wraparound support to families of premature or critically ill full-term babies as they take their journey through neonatal care, the transition home, and onwards.

Postal Address

Ward 92 NICU, Auckland City Hospital, Park Road, Grafton, Auckland 1023.



Statement of Service Performance

'What did we do?', 'When did we do it?'

The Little Miracles Trust - For the year ended 31 December 2024

Description of Entity's Outcomes

The Trust has four objectives:

1. Be a support network for parents who have – or have had, a baby in a neonatal intensive care or special care baby unit: providing assistance and support to the children and their whānau.
2. Assist with advancement of medical research and education that advances the aims of the Trust, and the activities of neonatal units.
3. Assist staff who work in the units in ways that can support families through their hospital experience.
4. To do any other mahi that advances the aims of the Trust, including advocacy, where deemed appropriate by the Trustees.

Our mahi provides assistance to neonatal families in a range of different ways: supporting all whānau and enhancing outcomes for their babies in the unit, the transition home and onwards.

This includes: the delivery of in-unit cot-side peer support; issuing Emergency Care Packs and 'Pick-meup' packs; providing access to hardship support; running a national network of developmental playgroups; sourcing and sharing personal stories; developing and sharing information resources; and supporting purchase of equipment for the neonatal units. In addition, we help advance neonatal expertise through providing lived experience expertise and advocacy to research and other initiatives important to our community, and funding neonatal staff training.

Account	2024	2023
	\$	\$

Description and Quantification of the Entity's Outputs

Hours of cot-side peer support delivered in NICU	5,928	
Developmental playgroups delivered	146	
Hardship vouchers issued to neonatal families	651	
Emergency care packs hand-delivered to NICU families	3,292	3,500
Emergency care packs sent to SCBU	1,077	
Mother's Day 'Pick-me-up' packs sent to NICU & SCBU	475	475
Father's Day 'Pick-me-up' packs sent to NICU & SCBU	475	475
Secret Santa 'Pick-me-up' packs sent to NICU & SCBU	475	475

** Comparative numbers have been presented where available.*

Additional Output Measures

While the numbers presented in this statement afford a guide, it is important to note the nature of what we do means that additional insight is useful. The Trust is an organisation light on overheads and heavy on in-person commitment and passion. Much of our support activity is not captured in the financial statements; the prioritises inperson mahi – and in addition is able to source donated items and services which are passed onto our community in a range of ways. Some of the personal impact of these are represented in the qualitative feedback below.

Our Impact - Qualitative Feedback 2024

Family Assistance Fund vouchers:

'It was such a blessing during our unexpected challenging time. It definitely helped us to buy baby items and save money for 2 weeks. Thank you for being amazing and doing a wonderful service.'

Developmental Playgroup:

'Such a great playgroup!'

Cot-side Peer Support:

'The resources, care, and encouragement you offer help turn overwhelming times into something a little more manageable, and we're so grateful for the work you do. It means the world to families in neonatal care to know they're not alone, and you make sure of that every single day.'

'Shoutout to your amazing ladies in Waikato & Auckland NICU. We have finally been discharged from Rotorua today back home to Taupo after being in Waikato & a couple of small stints in Auckland since Good Friday 2024. (Our baby) is smashing it and we're such proud parents. Your support was amazing! Thank you.'

'As a scbu/nicu dad for a few months, the availability to have a ear to listen was great.'

Morning teas:

'This really helped me to step away for even just an hour when I was in SCBU with my boy recently during Jun-Aug 2024. Plus the korero was super helpful & put me at ease. The sweet treats were pretty awesome too. Jess is amazing.'

Emergency Care Packs:

'Was so appreciated and such a heartfelt gesture when in Dunedin NICU with our twins. Thank you so much.'

'I still remember walking into my local NICU one morning, and I was feeling rather down. I saw this little purple bag sitting atop my baby's incubator. After opening it and realising what it was I burst into tears (good tears!).'

Pick-Me Up Packs:

'It was a care package I didn't realise I needed and also a really big pick me up. To know us parents are thought of during a really hard chapter in our life is a blessing and we are so thankful for all the support we received during and after our NICU stay.'

'We ended up spending 19 days in SCBU with Jasper, which included Christmas Day. We did not expect the amazing, kind and useful presents from Little Miracles at all, and it made the hugest difference to what was a pretty grim day for us. I was absolutely blown away and in tears. Such unexpected generosity at such a vulnerable time... I'll remember that forever.'

Equipment for NICU/SCBU:

'Thank you so much for granting us the x6 breast feeding pillows. They have been so well received and well utilised. Many thanks once again from all of us in Hawkes Bay.'

Our Service:

'In the deeply jarring, life-changing moments when our son was born early, everything was uncertain. He struggled to breathe, covered in tubes, and we couldn't even hold him. A time of celebration kept on a knife edge of hope and fear. We ultimately spent 19 days in intensive care, and in that time, the beautiful care package from Little Miracles brought us joy, and human connection. While every baby, birth, and parent's circumstances are unique, it meant the world to us to feel we weren't alone - especially at Christmas.'

'Thank you for what you do. It is beautiful and valuable on so many levels, and we feel blessed to have received such care.'



Statement of Financial Performance

'How the Trust is funded and what it costs'

The Little Miracles Trust - For the year ended 31 December 2024

Account	Notes	2024 \$	2023 \$
Revenue			
Donations, fundraising and other similar revenue	1	469,346	368,030
Receipts from providing goods or services	1	348,663	312,148
Interest, dividends and other investment revenue		9,058	7,112
Other revenue	1	0	834
Total Revenue		827,067	688,123
Expenses			
Expenses related to public fundraising	2	20,497	17,676
Volunteer and employee related costs	2	525,539	441,439
Costs related to providing goods or service	2	226,880	248,655
Grants and donations made	2	2,000	3,723
Other expenses	2	52,027	47,261
Total Expenses		826,942	758,753
Surplus / (Deficit) for the Year		124	(70,630)

Statement of Financial Position

'What the Trust owns and owes others' The Little Miracles Trust - As at 31 December 2024

Account	Notes	2024 \$	2023 \$
Assets			
Current Assets			
Bank accounts and cash		456,770	339,304
Debtors and prepayments		3,025	5,086
Inventory - retail		19,737	32,077
GST receivable		3,300	3,525
Total Current Assets		482,832	379,992
Non-Current Assets			
Property, plant and equipment	3	13,609	8,782
Total Non-Current Assets		13,609	8,782
Total Assets		496,441	388,774
Liabilities			
Current Liabilities			
Creditors and accrued expenses		8,457	19,231
Employee leave liability		31,078	26,349
Income in advance		175,419	70,577
Other current liabilities	4	11,865	3,118
Total Current Liabilities		226,819	119,276
Total Assets less Total Liabilities (Net Assets)		269,623	269,499
Accumulated Funds			
Accumulated funds	5	269,623	269,499
Total Accumulated Funds		269,623	269,499

This statement should be read in conjunction with the attached Independent Review Report and Notes to the Performance Report.

Statement of Cash Flows

'How the cash flowed in and out'

The Little Miracles Trust - For the year ended 31 December 2024

Account	2024	2023
	\$	\$
Cash Flows from Operating Activities		
Donations, fundraising and other similar receipts	574,188	378,232
Receipts from providing goods or services	363,064	347,216
Interest, dividends and other investment receipts	9,058	7,112
Cash receipts from other operating activities	0	834
GST refunded / (paid)	225	738
Payments to suppliers and employees*	(778,962)	(717,296)
Donations or grants paid	(2,000)	(3,723)
Cash flows from other operating activities	(38,719)	(40,958)
Total Cash Flows from Operating Activities	126,853	(27,845)
Cash Flows from Investing and Financing Activities		
Payments to acquire property, plant and equipment	(9,388)	(3,090)
Total Cash Flows from Investing and Financing Activities	(9,388)	(3,090)
Net Increase / (Decrease) in Cash	117,465	(30,935)
Bank Accounts and Cash		
Opening cash	339,304	370,238
Closing cash	456,770	339,304
Net change in cash for period	117,465	(30,934)

**adjusted by \$359 for difference in FY23 playgroup costs (cash outgoing)*

Statement of Accounting Policies

'How the Trust does its accounting'

The Little Miracles Trust - For the year ended 31 December 2024

1. Basis of Preparation

These financial statements have been prepared in accordance with Public Benefit Entity Simple Format Reporting - Accrual (Not-For-Profit) (PBR SFR-A (NFP)) as issued by the External Reporting Board (XRB).

The Trust qualifies for Tier 3 reporting as its total expenses are less than \$2 million, and it does not have public accountability.

The financial statements are prepared under the historical cost convention and are presented in New Zealand dollars, rounded to the nearest dollar.

2. Specific Accounting Policies

Revenue Recognition

Revenue is recognised as follows:

- **Donations and Bequests:** Recognised as revenue upon receipt, unless subject to a use or return condition, in which case it is recorded as a liability (income in advance) until conditions are met.
- **Grants and Funding:** Recognised as revenue when entitlement is established, unless there is a use or return condition, in which case the grant is deferred until the condition is met.
- **Goods and Services Provided:** Revenue from goods or services is recognised when the goods or services are delivered.

Donated Goods and Services (Volunteer Contributions)

The Trust receives volunteer support. In accordance with PBE SFR-A (NFP), volunteer time and donated goods are not recognised as revenue, unless they can be reliably measured (i.e. donated goods sold in the retail part).

Goods and Services Tax (GST)

The financial statements are prepared on a GST exclusive basis, except for accounts receivable and accounts payable, which are stated inclusive of GST.

Bank Accounts and Cash

Cash and cash equivalents include cash on hand, bank accounts, and short-term deposits (with maturities of 90 days or less).

Fixed Assets and Depreciation

Fixed assets are recorded at cost less accumulated depreciation and impairment losses. Depreciation is calculated using the diminishing value (DV) method and the straight-line (SL) method at the following rates: office equipment 40-50% DV, and plant and equipment at either 12-30% DV or 30% SL.

Assets with a cost below \$1,000 are expensed in the year of purchase.

Accounts Receivable

Accounts receivables are stated at estimated realisable value, after providing for doubtful debts where necessary. Bad debts are written off during the period in which they are identified.

Employee Costs

Employee entitlements (i.e. wages, holiday pay) are recorded on an accrual basis. Contributions to KiwiSaver and other superannuation schemes are recognised as expenses when incurred.

Income Tax

The Trust is registered as a charitable organisation with Charities Services and is exempt from income tax under the Income Tax Act 2007.

Related Party Transactions

All transactions with related parties (i.e. trustees, board members, key employees) are disclosed in the Notes to the Financial Statements.

Financial Instruments

The Trust's financial assets and liabilities include cash, accounts receivable (AR), accounts payable (AP), and term deposits. These are measured at amortised cost, which means recorded at their original amount and adjusted for impairment (i.e. AR) or repayments. For the Trust, this is simply the amount expected to be paid or received.

Changes in Accounting Policies

There have been no changes in accounting policies during the year. Policies have been applied consistently with the previous reporting period.

Notes to the Performance Report

The Little Miracles Trust For the year ended 31 December 2024

Account	2024	2023
	\$	\$
1. Analysis of Revenue		
Fundraising Revenue		
Donations received - payroll giving	1,826	2,194
Donations received - individual or corporate donations	393,580	281,962
Donations received - campaign activity	625	0
Grant funding received - restricted funds	41,596	42,530
Fundraising - income	31,719	41,344
Total Fundraising Revenue	469,346	368,030
Revenue from Providing Goods or Services		
Revenue from providing goods or services - restricted funds	195,668	89,023
Breast pump hire - income	32,806	42,945
Breastfeeding equipment - sales	66,176	91,546
Clothing - sales	18,201	32,482
Donated goods - sales	29,394	39,385
Other hireage - income	1,026	896
Publications - sales	0	1,211
Sundry merchandise - sales	5,392	14,660
Total Revenue from Providing Goods or Services	348,663	312,148
Other Revenue		
Other income - COVID 19 wage subsidy	0	834
Total Other Revenue	0	834

Account	2024	2023
	\$	\$
2. Analysis of Expenses		
Expenses Related to Public Fundraising		
Advertising and marketing	13,171	10,545
Fundraising expenses	7,326	7,130
Total Expenses Related to Public Fundraising	20,497	17,676
Volunteer and Employee Related Costs		
ACC	759	893
Contractors	2,520	1,010
Management fees and expenses	4,211	2,259
Staff development and related costs	1,005	1,229
Staff travel and parking	20,005	10,005
Staff remuneration and entitlements	497,040	426,043
Total Volunteer and Employee Related Costs	525,539	441,439
Costs Related to Providing Goods or Services		
Care and pick me up packs	50,268	64,860
Cost of sales - retail	68,700	76,657
Hardship support	65,897	21,962
Lunches and morning teas	6,044	6,967
Playgroups	23,837	24,770
Providing furniture for families in NICU	8,855	16,588
Providing neonatal equipment for NICU	3,279	36,852
Total Costs Related to Providing Goods or Services	226,880	248,655

Account	2024	2023
	\$	\$
Grants and Donations Made		
Supporting neonatal staff - professional development and R&D	2,000	3,723
Total Grants and Donations Made	2,000	3,723
Other Expenses		
Audit fees	4,000	4,000
Bank fees	4,937	4,205
Depreciation	4,395	7,005
Design work and online resources	5,426	0
EFTPOS expenses	1,839	2,161
General expenses	1,554	501
Information systems - IT infrastructure	8,341	7,575
Insurance	2,134	1,879
Postage and freight	6,964	4,925
Printing and stationery	7,060	6,437
Storage	3,301	5,295
Subscriptions	2,077	3,278
Total Other Expenses	52,027	47,261

Account	2024	2023
	\$	\$
3. Property, Plant and Equipment		
Office Equipment and Website		
Office equipment and website owned	21,871	13,608
Less accumulated depreciation	(12,754)	(11,626)
Total Office Equipment and Website	9,117	1,982
Plant and Equipment		
Plant and machinery owned	89,460	89,460
Less accumulated depreciation	(84,967)	(82,660)
Total Plant and Equipment	4,493	6,800
Total Property, Plant and Equipment	13,609	8,782
4. Analysis of Other Current Liabilities		
Other Current Liabilities		
Bonds held - hire equipment	5,945	2,950
Inventory write-down provision	3,920	0
Training grant provision	2,000	0
Unit funds held in trust	0	168
Total Other Current Liabilities	11,865	3,118

Account	2024	2023
	\$	\$

5. Accumulated Funds

Accumulated Funds

Opening balance	269,499	340,129
Surplus/(Deficit) for the year	124	(70,630)

Total Accumulated Funds	269,624	269,499
--------------------------------	----------------	----------------

6. Commitments

There are no commitments as at 31 December 2024 (2023: nil).

7. Related Parties

The Trustees have not received any amounts from the Trust (2023: nil).

8. Events After the Balance Date

There are no events that have occurred after the balance date that would have a material impact on the Performance Report. (2023: nil)

9. Ability to Continue Operating

The Trust will continue to operate for the foreseeable future, and aims to maintain cash reserves equivalent to six months of average budgeted operating expenses, plus an additional 10%, as a safeguard for operational stability. These reserves have been accumulated to provide a financial buffer, ensuring the coverage of employee-related expenses and critical essential operating costs.

The Trust continues to adopt the going concern basis in preparing its financial statements.

10. Contingent Liabilities

There are no contingent liabilities as at 31 December 2024 (2023: nil).



INDEPENDENT ASSURANCE PRACTITIONER'S REVIEW REPORT

To the Trustees of The Little Miracles Trust

We have reviewed the accompanying performance report of the Little Miracle Trust, which comprises the entity information and statement of financial position as at 31 December 2024, and the statement of service performance, statement of financial performance and statement of cash flows for the year then ended, and a summary of significant accounting policies and other explanatory information.

Trustees' Responsibility for the Performance Report

The Trustees are responsible on behalf of the entity for;

- a) Identifying outcomes and outputs, and quantifying the outputs to the extent practicable, that are relevant, reliable, comparable, and understandable, to report in the statement of service performance;
- b) The preparation and fair presentation of the performance report which comprises:
 - The entity information
 - The statement of service performance; and
 - The statement of financial performance, statement of financial position, statement of cash flows, statement of accounting policies and notes to the performance reportin accordance with Public Benefit Entity Simple Format Reporting — Accrual (Not-For-Profit) issued in New Zealand by the New Zealand Accounting Standards Board, and;
- c) For such internal control as the Trustees determine is necessary to enable the preparation of the performance report that is free from material misstatement, whether due to fraud or error.

Assurance Practitioner's Responsibility

Our responsibility is to express a conclusion on the performance report. We conducted our review of the statement of financial performance, statement of financial position, statement of cash flows, statement of accounting policies and notes to the performance report in accordance with International Standard on Review Engagements (New Zealand) (ISRE (NZ)) 2400 (Revised), *Review of Historical Financial Statements Performed by an Assurance Practitioner who is not the Auditor of the Entity*, and the review of the entity information and the statement of service performance in accordance with the International Standard on Assurance Engagements (New Zealand) (ISAE (NZ)) 3000 (Revised). Those standards require us to conclude whether anything has come to our attention that causes us to believe that the performance report, taken as a whole, is not prepared in all material respects in accordance with the Public Benefit Entity Simple Format Reporting – Accrual (Not-For-Profit) reporting framework. Those standards also require us to comply with relevant ethical requirements.

A review of financial statements in accordance with ISRE (NZ) 2400 (Revised) and ISAE (NZ) 3000 (Revised) is a limited assurance engagement. We will perform procedures, primarily consisting of making enquiries of management and others within the entity, as appropriate, and applying analytical procedures, and evaluates the evidence obtained. The procedures selected depend on our judgement, including the areas identified where a material misstatement is likely to arise and includes performing procedures to obtain evidence and evaluating whether the reported outcomes and outputs, and quantification of the outputs to the extent practicable, are relevant, reliable, comparable and understandable.

The procedures performed in a review are substantially less than those performed in an audit conducted in accordance with International Standards on Auditing (New Zealand) and ISAE (NZ) 3000 (Revised). Accordingly, we do not express an audit opinion on the performance report.

Other than in our capacity as assurance practitioner we have no relationship with, or interests in, The Little Miracle Trust.

Other Matter

We draw attention to the fact that in the prior year, we issued a qualified conclusion regarding the accurate recording of the following outputs identified in the Statement of Service Performance:

- Number of support packs delivered to families
- Number of Mother's Day 'Pick me up' packs provided
- Number of Father's Day 'Pick-me-up' packs provided
- Number of Secret Santa 'Pick-me-up' pack

Our conclusion on the current year's Statement of Service Performance is not modified in respect of this matter.

Conclusion

Based on our review, nothing has come to our attention that causes us to believe that:

- a) The reported outcomes and outputs, and quantification of the outputs to the extent practicable, are not suitable;
- b) The performance report does not present fairly, in all material respects,
 - The financial position of The Little Miracle Trust as at 31 December 2024, and its financial performance and cash flows for the year then ended; and
 - The entity information and its service performance for the year then ended; in accordance with Public Benefit Entity Simple Format Reporting - Accrual (Not-For-Profit).

PKF Goldsmith Fox Audit

PKF Goldsmith Fox Audit Limited

Christchurch, New Zealand

2 April 2025

Directory

Papatohu

Legal Name of Entity

The Little Miracles Trust

Entity Type and Legal Basis

The Little Miracles Trust is a Charitable Trust incorporated under the Charities Trust Act 1957.

Registration Number

CC56619

Postal Address

Ward 92 NICU
Auckland City Hospital
Park Road, Grafton, Auckland 1023

Contact

Email: info@littlemiraclestrust.org.nz

 [littlemiraclestrust](#)

 [littlemiraclestrust](#)

 [The Little Miracles Trust](#)

www.littlemiraclestrust.org.nz

